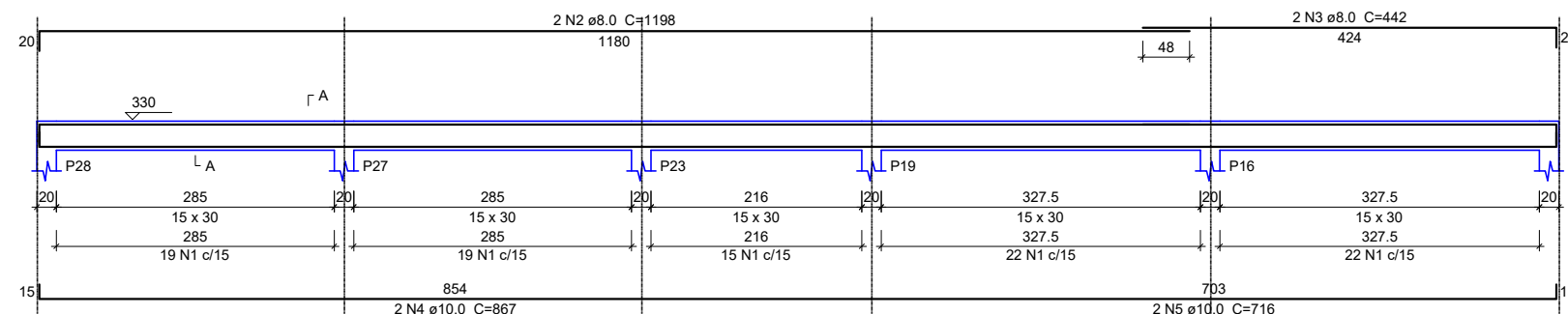
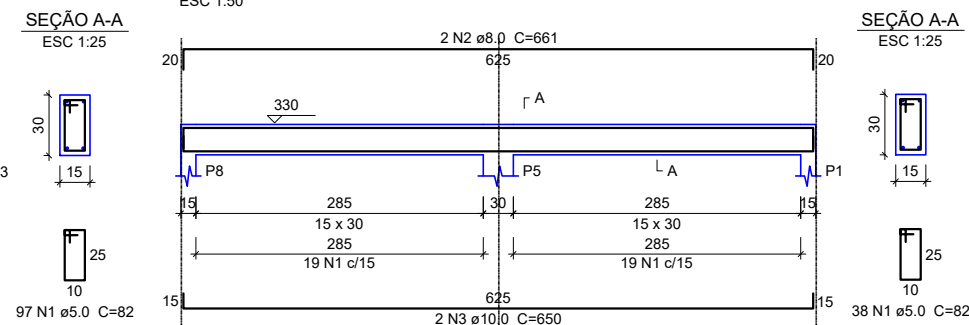


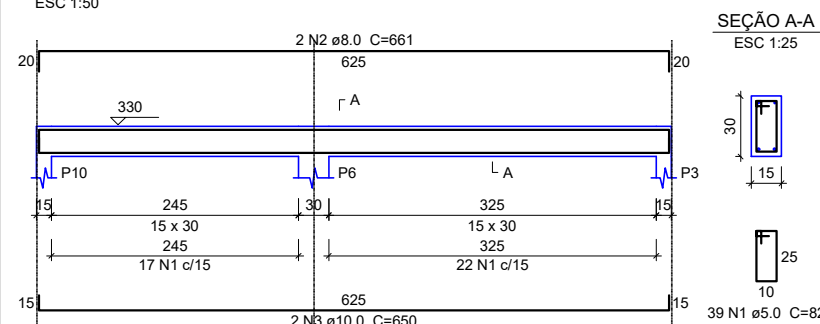
VC19
ESC 1:50



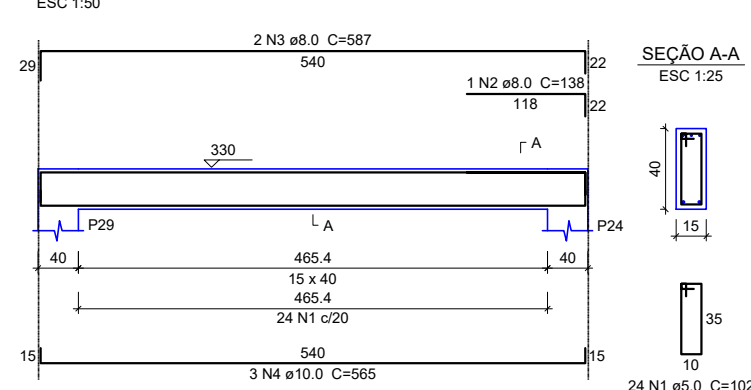
VC21
ESC 1:50



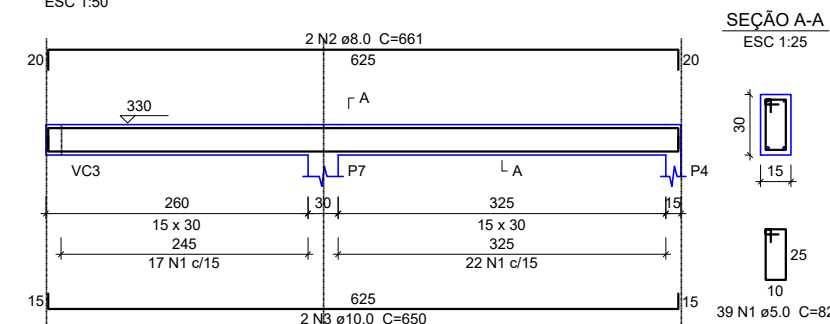
VC23
ESC 1:50



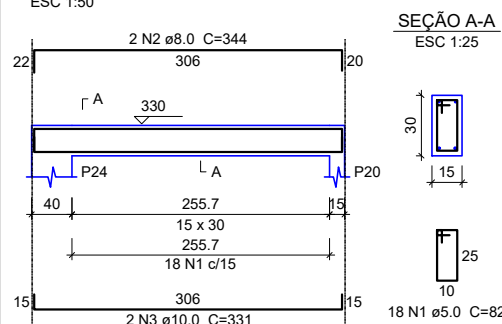
VC24
ESC 1:50



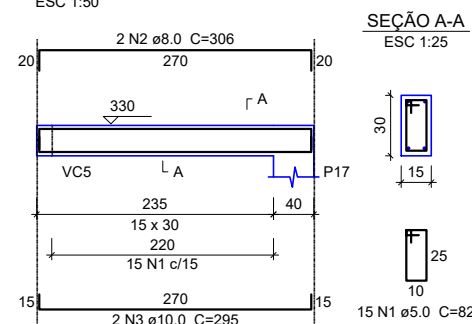
VC30
ESC 1:50



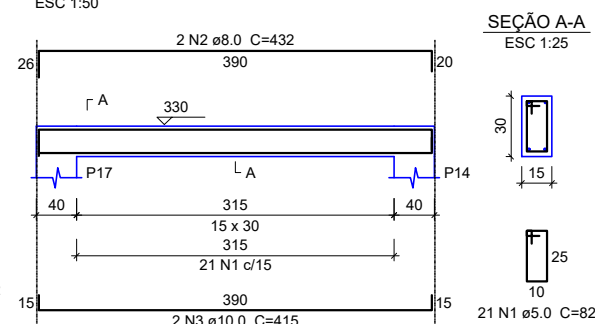
VC25
ESC 1:50



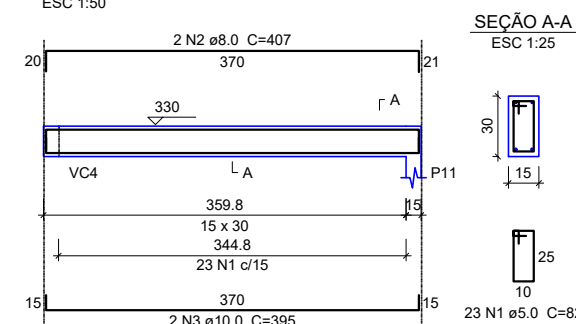
VC26
ESC 1:50



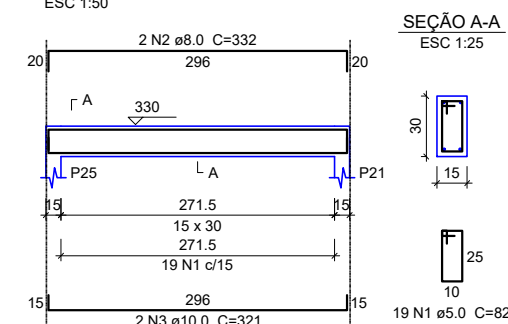
VC27
ESC 1:50



VC28
ESC 1:50



VC29
ESC 1:50



VIGA COBERTURA

ESC: 1/150



PREFEITURA MUNICIPAL DE VÁRZEA GRANDE
Av. Castelo Branco, Espaço Municipal, 2500 - Centro Sul, Várzea Grande/MT
CEP 78125-700 - Fone/Fax: 65 3688 8000
LOCALIZAÇÃO: RUA SÃO PAULO (LOT. NOVA VÁRZEA GRANDE)
CEP: 78135-730 VÁRZEA GRANDE - MT

PROJETO: PROJETO ESTRUTURAL
OBRA: REFORMA E AMPLIAÇÃO DA EMEB JAIME VERÍSSIMO DE CAMPOS JUNIOR "JAIMINHO"

DATA: JULHO/2021
UNIDADE: METRO

AUTOR DO PROJETO: MATHEUS MARCANZONI LEITE
ENGENHEIRO CIVIL CREA - MT 042157

FOLHA Nº: 11/17